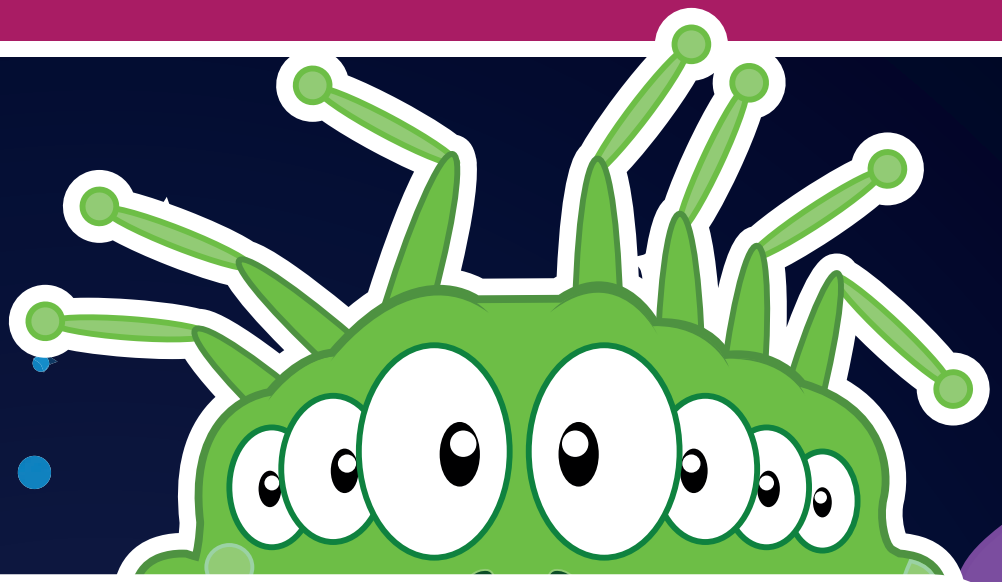


Learn Its Step 15



$$1 \times 12 = \mathbf{12}$$

$$7 \times 12 = \mathbf{84}$$

$$2 \times 12 = \mathbf{24}$$

$$8 \times 12 = \mathbf{96}$$

$$3 \times 12 = \mathbf{36}$$

$$9 \times 12 = \mathbf{108}$$

$$4 \times 12 = \mathbf{48}$$

$$10 \times 12 = \mathbf{120}$$

$$5 \times 12 = \mathbf{60}$$

$$11 \times 12 = \mathbf{132}$$

$$6 \times 12 = \mathbf{72}$$

$$12 \times 12 = \mathbf{144}$$

